



AQUAFORMS

QBWS - Surface Mount

Decorative architectural wall sconce

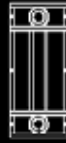
Formed aluminum construction

Stainless steel hardware

Opal acrylic lens

Perforated aluminum decorative shield

Compact fluorescent sources

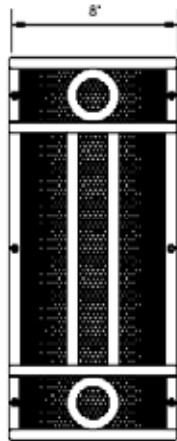


AQUAFORMS

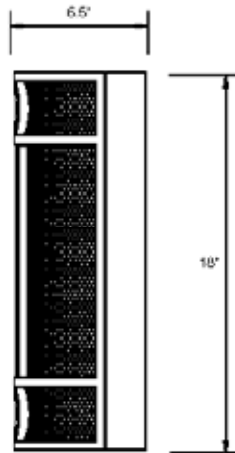
QBWS - Surface Mount

DIMENSIONS

FRONT



SIDE



SPECIFICATIONS

MOUNTING

Surface wall mount

COLOR

Textured or smooth polyester powder coat finishes
RAL colors available

BALLASTS

Compact fluorescent = HPF Electronic

OPTIONS

See technical data sheets for details.

MAXIMUM LAMP TYPE*

Incandescent

2x80 watts

Compact fluorescent

2x32 watts

* Consult technical data sheets for specific lamp application

LISTINGS



Wet location luminaire



Listed to applicable CSA and UL standards

ADDITIONAL STYLES



AQSQ - Surface Mount



EIWS - Surface Mount



NCOL - Surface Mount



NCOL2 - Surface Mount



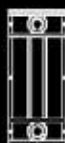
NCRL - Surface Mount



NCRL2 - Surface Mount



OARL - Surface Mount

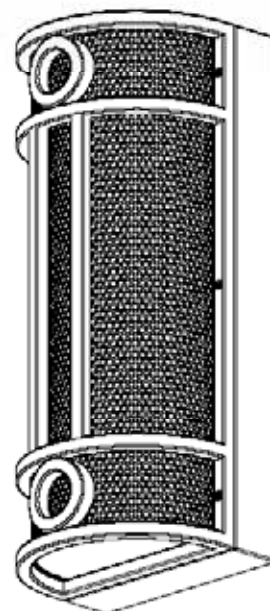


AQUAFORMS

QBWS - Surface Mount

STANDARD FEATURES

- Exterior decorative architectural wall mounted sconce
- Formed aluminum housing
- Aluminum decorative bands
- Opal acrylic lens
- Perforated aluminum decorative shield
- Compact fluorescent sources



Wet location luminaire



Listed to applicable CSA and UL standards.

ORDERING CODE GUIDE

SERIES	MODEL	LAMP	VOLT	COLOR	OPTIONS
QBWS	6800				
		2 x INC80T10	120	<u>TEXTURED FINISHES</u>	DB = dimming ballast
		2 x PLC13	277 ①	TAL = textured aluminum	BO = bands only
		2 x PLC18 ①	347 ①	TBK = textured black	
		2 x PLC26 ①		TBZ = textured bronze	
		2 x PLT32 ①		TWH = textured white	

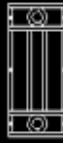
SMOOTH FINISHES

AL = silver/illo
 BK = black
 BY = buttercup yellow
 DBZ = dark bronze
 DO = deep orange
 EG = emerald green
 RB = royal blue
 RR = rich red
 WH = white

RAL colors available

Notes:

- ① Comes with 2" deep ballast back box



AQUAFORMS

QBWS - Surface Mount

DIMENSIONS

