



STEPS

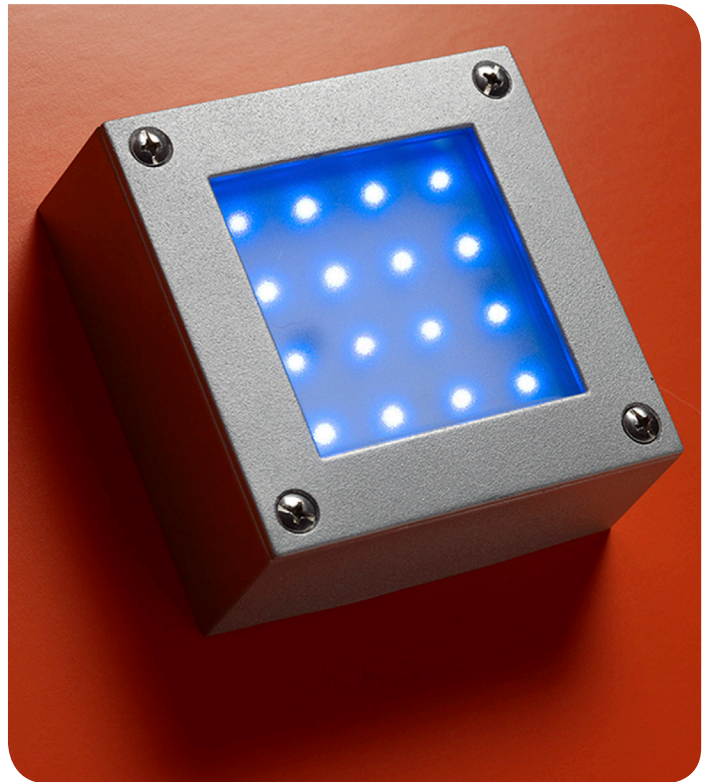
MINI

STANDARD FEATURES

- Die-cast
- Prismatic tempered glass lens
- Galvanized steel and powder coated back box
- Suitable for concrete or non insulated wall
- Closed cell continuous neoprene gasket
- Approved for through wiring



Intertek



SERIES	MODEL	STYLE	LAMP	VOLT	COLOR	OPTIONS
SSSL RSSL	5000	NLU CG LV M1 M2 NLU TH CG	LED 600Lm	120V	TAL = TEXTURED ALUMINIUM	RED = E.L.S. ® GRN = E.L.S. ® BLU = E.L.S. ® WW28K = 2800-3100K Warm White E.L.S. ®

ORDERING INFORMATION

SERIES	MODEL	LAMP	VOLT	LUMENS	CCT	CONTROL	COLOR	OPTIONS

Consult factory for voltage and other lamp options. Product specifications subject to change without notice.

1. Programmable drivers at the PACE factory
2. Color tunable
3. Capable of remote dimming
4. Can be equipped with motion sensors for on/off functioning
5. Can be equipped with light sensors for dusk-to-dawn automatic on/off operation
6. Bluetooth commissioning sensor capability for Android and iOS

Although PACE has prepared the information contained in this document with all due care, PACE does not warrant or represent that the information is free from errors or omission. Whilst the information is considered to be true and correct at the date of publication, changes in circumstances after the time of publication may impact on the accuracy of the information. The information may change without notice and PACE is not in any way liable for the accuracy of any information printed and stored or in any way interpreted or used.

In the interest of product improvement, Pace reserves the right to make technical and product specification changes without notice. Consult factory for voltage and other lamp options.



PACE

ILLUMINATION

STEPS

MINI

SIZES

Small = 10.5" x 4.3"

Large = 10.5" x 5.3"

MOUNTING

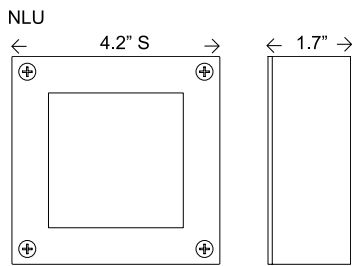
Recessed wall

COLOR

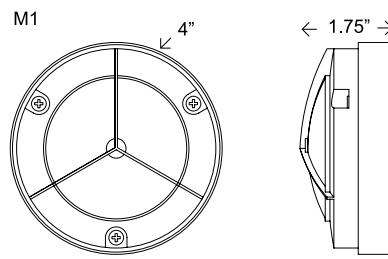
Textured or smooth polyester powder coat finishes

RAL colors optional

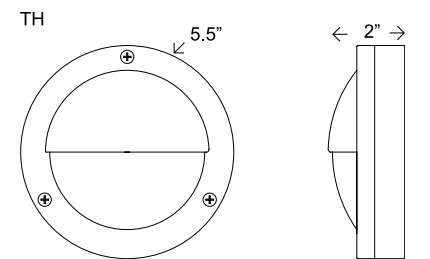
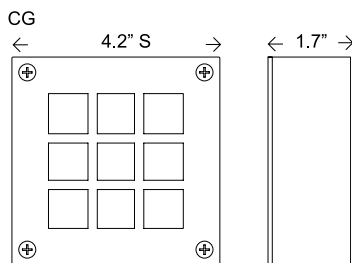
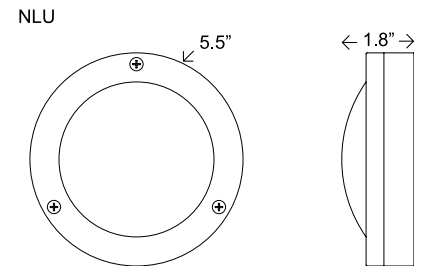
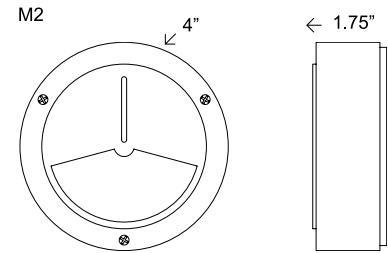
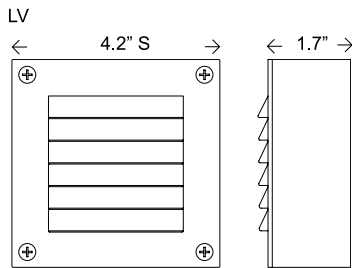
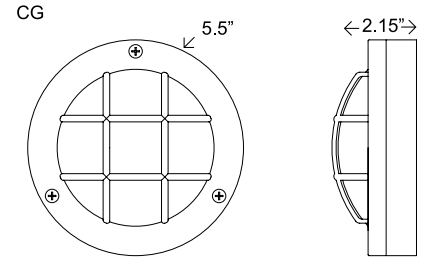
SSSL



RSSL



RSSL



Although PACE has prepared the information contained in this document with all due care, PACE does not warrant or represent that the information is free from errors or omission. Whilst the information is considered to be true and correct at the date of publication, changes in circumstances after the time of publication may impact on the accuracy of the information. The information may change without notice and PACE is not in any way liable for the accuracy of any information printed and stored or in any way interpreted or used.

In the interest of product improvement, Pace reserves the right to make technical and product specification changes without notice. Consult factory for voltage and other lamp options.