

PAMPAS

TPWM - Wall Mount



PROJECT

DATE

COMMENTS

STANDARD FEATURES

- Classic Architectural Design
- Heavy Gauge Construction Suitable for Outdoor Environments
- Extruded And Laser Cut Aluminum Housing
- Milky White Acrylic Lens
- Infinite Applications
- Three Sizes Available



| SERIES | MODEL | OAH HEIGHT | LED LAMP | LUMENS | CCT CRI 80 | VOLT | CONTROL | COLOR | OPTIONS |
|--------|-------|------------|----------|--------|--|-------------|---------------------------|--|---|
| TPWM | 4000 | S = SMALL | 18W | 2000 | K27 = 2700K K3 = 3000K K35 = 3500K K4 = 4000K K5 = 5000K | 120/277 UNV | DD = 0-10V Dimming Driver | TAL = Textured Aluminum TBK = Textured Black TBZ = Textured Bronze TWH = Textured White CC = Custom Color RAL = RAL Color | PE = Photocell EM = Emergency Backup MS = Motion Sensor |
| | | M = MEDIUM | 35W | 4000 | | | | | |
| | | L = LARGE | 70W | 8000 | | | | | |

ORDERING INFORMATION

| SERIES | MODEL | OAH HEIGHT | LED LAMP | LUMENS | CCT CRI 80 | VOLT | CONTROL | COLOR | OPTIONS |
|--------|-------|------------|----------|--------|------------|------|---------|-------|---------|
| | | | | | | | | | |

ORDERING EXAMPLE: TPWM - 4000 - M - LED 30W - 3500 - K3 - 120/277 - DD - TAL - EM

Consult factory for voltage and other lamp options. Product specifications subject to change without notice.

1. Programmable drivers at the PACE factory
2. Color tunable
3. Capable of remote dimming
4. Can be equipped with motion sensors for on/off functioning
5. Can be equipped with light sensors for dusk-to-dawn automatic on/off operation
6. Bluetooth commissioning sensor capability for Android and iOS



PACE Illumination 5500 West 111th Street | Oak Lawn, Illinois 60453 | 708-499-1700 | quotes@paceillumination.com

Although PACE has prepared the information contained in this document with all due care, PACE does not warrant or represent that the information is free from errors or omission. Whilst the information is considered to be true and correct at the date of publication, changes in circumstances after the time of publication may impact on the accuracy of the information. The information may change without notice and PACE is not in any way liable for the accuracy of any information printed and stored or in any way interpreted or used.

In the interest of product improvement, Pace reserves the right to make technical and product specification changes without notice. Consult factory for voltage and other lamp options.

REV DATE:
10122023

PAMPAS

TPWM - Wall Mount



SIZES

- Small = 10.5" x 12"
- Medium = 14" x 17.5"
- Large = 18.5" x 24"

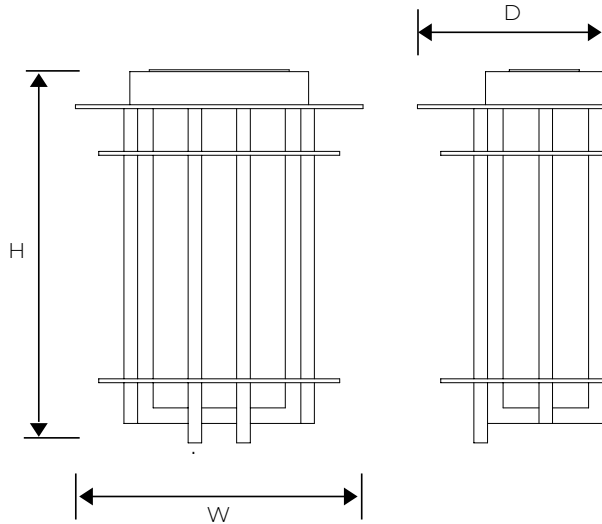
MOUNTING

- Wall Mount

COLOR

- Textured or smooth polyester powder coat finishes
- RAL colors available

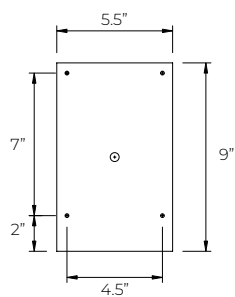
DIMENSIONS



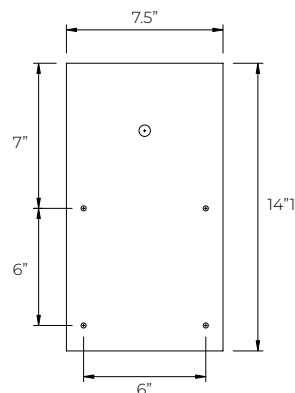
| | W | H | D |
|---------------|-------|-------|-------|
| Small | 10.5" | 12.0" | 6.0" |
| Medium | 14.0" | 17.5" | 8.0" |
| Large | 18.5" | 24.0" | 12.0" |

Mounting Plate

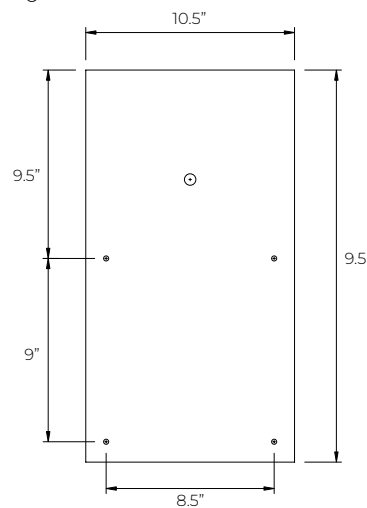
Small



Medium



Large



**CENTER HOLE MOUNTS TO STANDARD
4" J-BOX USING CROSSBAR**



PACE Illumination 5500 West 111th Street | Oak Lawn, Illinois 60453 | 708-499-1700 | quotes@paceillumination.com

Although PACE has prepared the information contained in this document with all due care, PACE does not warrant or represent that the information is free from errors or omission. Whilst the information is considered to be true and correct at the date of publication, changes in circumstances after the time of publication may impact on the accuracy of the information. The information may change without notice and PACE is not in any way liable for the accuracy of any information printed and stored or in any way interpreted or used.

In the interest of product improvement, Pace reserves the right to make technical and product specification changes without notice. Consult factory for voltage and other lamp options.

REV DATE:
10122023