



# CILINDRO

## EUDC-II-Up/Down

### STANDARD FEATURES

- 3 mm (.0938") durable aluminum housing
- with seamless finish
- Stainless steel hardware
- Silicone gasket
- Clear tempered glass lens
- Conforms to applicable UL and CSA standards Spun aluminum, electro-polished reflector



Intertek



SERIES	MODEL	SIZE	LAMP	VOLT	LUMENS	CCT	CONTROL	REFLECTOR	COLOR	OPTIONS
EUDC-II-UD	900	8'	16W	120-277UNV 277-347UNV	2200	3500	0-10V DIM	AC=CLEAR CONE GC=GOLD CONE WC=WHITE CONE BB=BLACK BAFFLE WB=WHITE BAFFLE	TAL: Textured Aluminum TBK: Textured Black TBZ: Textured Bronze TWH: Textured White	MS=MOTION SENSOR RD=REMOTE DIMMING BT=BLUETOOTH EM=EMERGENCY BACKUP PE1=PHOTOCELL 120V PE2=PHOTOCELL 277V TPS=TAMPER PROOF SCREWS SC 45 DEGREE= HANG STRAIGHT- STEM MOUNT ONLY MAX STEM LENGTH= 12 FT *
					2265	4000				
			2335		5000					
			88W		11,062	3500				
			11344		4000					
12187	5000									

### ORDERING INFORMATION

SERIES	MODEL	SIZE	LAMP	VOLT	LUMENS	CCT	CONTROL	REFLECTOR	COLOR	OPTIONS

Consult factory for voltage and other lamp options. Product specifications subject to change without notice.

1. Programmable drivers at the PACE factory
2. Color tunable
3. Capable of remote dimming
4. Can be equipped with motion sensors for on/off functioning
5. Can be equipped with light sensors for dusk-to-dawn automatic on/off operation
6. Bluetooth commissioning sensor capability for Android and iOS

Although PACE has prepared the information contained in this document with all due care, PACE does not warrant or represent that the information is free from errors or omission. Whilst the information is considered to be true and correct at the date of publication, changes in circumstances after the time of publication may impact on the accuracy of the information. The information may change without notice and PACE is not in any way liable for the accuracy of any information printed and stored or in any way interpreted or used.

In the interest of product improvement, Pace reserves the right to make technical and product specification changes without notice. Consult factory for voltage and other lamp options.



**PACE**  
ILLUMINATION

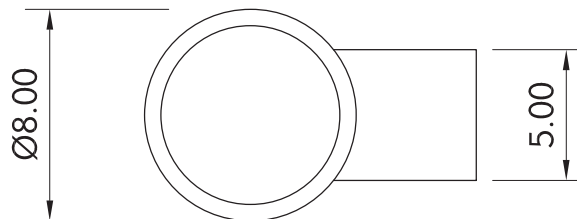
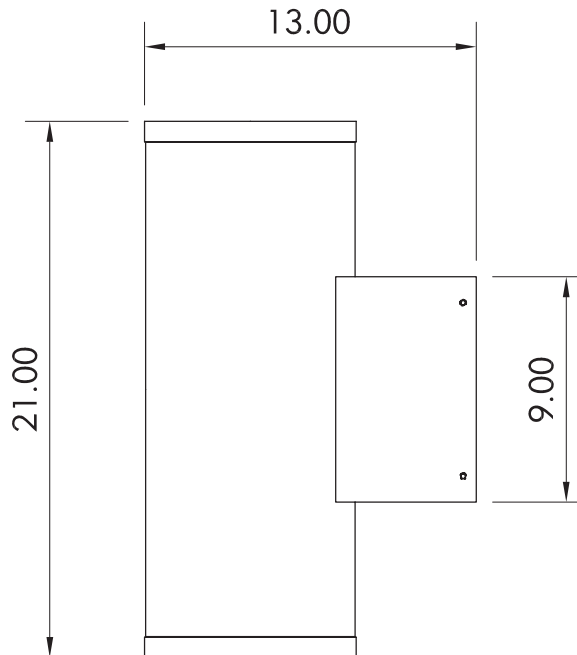
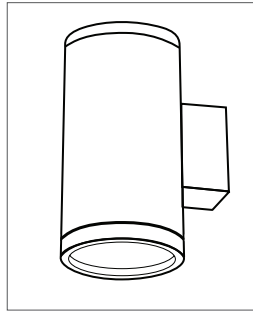
# CILINDRO

EUDC-II-Up/Down

**SIZES**  
8" diameter

**MOUNTING**  
Formed aluminum arm with wall plate  
Mounts to standard 4" J-Box

**COLOR**  
Textured or smooth polyester powder coat finishes  
RAL Colors available



**U/D WALL ARM**

Although PACE has prepared the information contained in this document with all due care, PACE does not warrant or represent that the information is free from errors or omission. Whilst the information is considered to be true and correct at the date of publication, changes in circumstances after the time of publication may impact on the accuracy of the information. The information may change without notice and PACE is not in any way liable for the accuracy of any information printed and stored or in any way interpreted or used.

In the interest of product improvement, Pace reserves the right to make technical and product specification changes without notice. Consult factory for voltage and other lamp options.